

Community Amenities

- Swimming pool
- Tennis court • Business center
- Newly remodeled clubhouse
- Adjacent to Centerville library; Stubbs Park and Centerville Police Department
- Located in the prestigious Centerville School District
- Moments away from shopping, dining and entertainment

*Welcome to Revere Village...*a quiet, secluded community located in the heart of Centerville. Stubbs Park is right next door, and the Washington Township-Centerville Library is a short walk away. Our community is located on State Route 48 just moments away from I-675 and I-75. At home, you can stay in shape or simply relax. Our tennis court, swimming pool and sundeck are there for your enjoyment. Our newly renovated clubroom is a great place to meet your neighbors and the business center will help you stay organized.

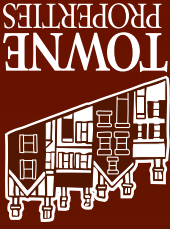
Directions

I-75 to I-675 north. Take exit 4A toward Centerville. Turn right off ramp onto Alex-Bell Pike. Turn right on Far Hills and follow approx. 2 miles. We're on your right just before Spring Valley Road.

Contact

865 Revere Village Court • Centerville, Ohio 45458
 tel 937 433 5371 fax 937 433 8675 • www.RevereVillageApts.com

Professionally Managed
 by Towne Properties



Welcome Home

REVERE
 VILLAGE



Make Yourself at Home

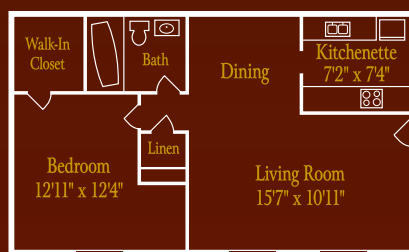
Welcome to Revere Village...a quiet, secluded community in the heart of Centerville. You'll feel right at home as you stroll the tree-lined streets and explore the warm brick buildings. Featuring the traditional charm of colonial architecture and the beauty of 26 acres of immaculately maintained grounds, Revere Village offers quality living within peaceful surroundings.

Floorplans

INDEPENDENCE

625 sq. ft.

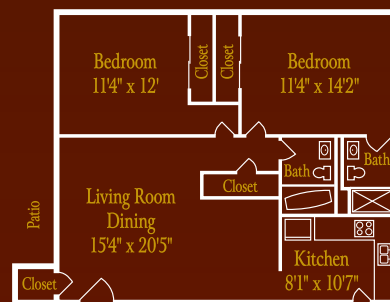
\$



BEDFORD

900 sq. ft.

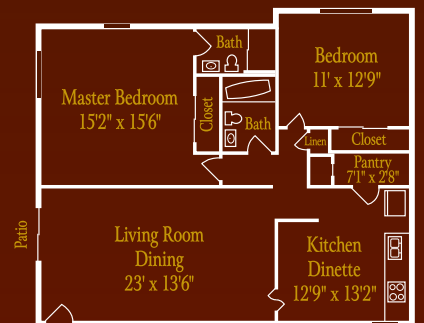
\$



PATRICK HENRY

1100 sq. ft.

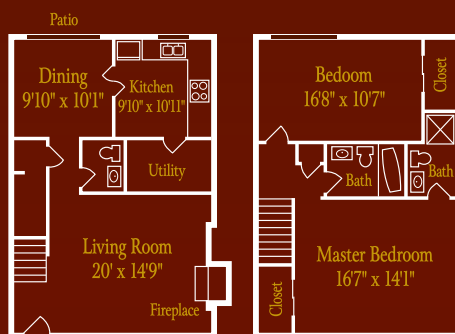
\$



THOMAS JEFFERSON

1300 sq. ft.

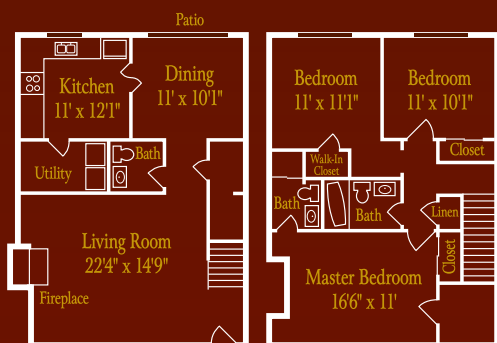
\$



GEORGE WASHINGTON

1500 sq. ft.

\$



Amenities

- Abundant closet space • Fireplaces available • Flexible lease terms • Laundry facilities • Pet friendly
- All townhomes feature washer/dryer connections • Washers/dryers available • Private patios & balconies